

소형경량 이젝터 유니트

싱글타입(센서없음) EVS

매니폴드타입(센서부착) EVM

주문방법

EVS -

1	2	3	4
---	---	---	---

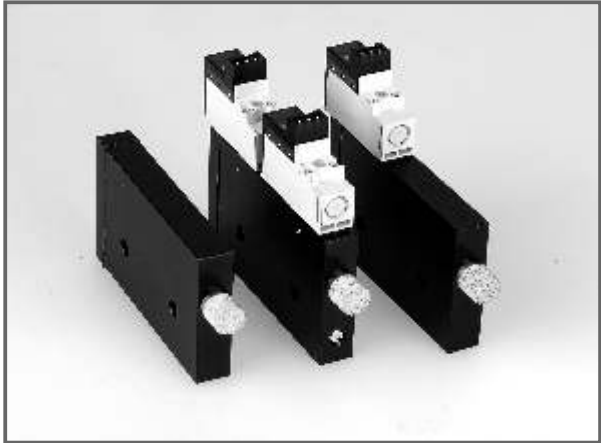
EVSM-

1	2	3	4	5
---	---	---	---	---

 -

6

- ① Nozzle 경
 - 05 Ø0.5
 - 07 Ø0.7
- ② 도달진공도 kPa(mmHg)
 - H -87(-650)
- ③ 공급공기압력 MPa(kgf/ G)cm²
 - S 0.5kPa
- ④ 밸브전압(램프,서지킬러 첨부 커넥터) ※ 공급공기 유로상태 상시폐,
 - 무기호 : 공기공급밸브, 진공 파괴밸브없음
 - A : DC24V 공기공급밸브부착
 - B : DC24V 공기공급밸브부착, DC24V 진공파괴밸브부착
- ⑤ 매니폴드 베이스
 - 2연 ~ 8연
- ⑥ 센서타입
 - S 부압(-101~0kPA) DIGITAL IND' NPN 오픈커넥터
 - SI 부압(-101~0kPA)



사양

사용유체	공기(비부식성 . 불연성기체)
사용온도범위(℃)	5 ~ +50
급유	불필요
사용압력범위(MPa)	0.2~0.7
공급공기 유로상태	상시폐
제어밸브 형식	파일럿형. 록 논록 양용. DC24±10%
필터 엘레먼트 재질	동 소결

진공성능표

	노즐직경	흡입량	도달진공도	공기소비량	공급압력
05HS	Ø05	6	650	10	0.5
07HS	Ø07	13	650	21	0.5

보수부품 형식

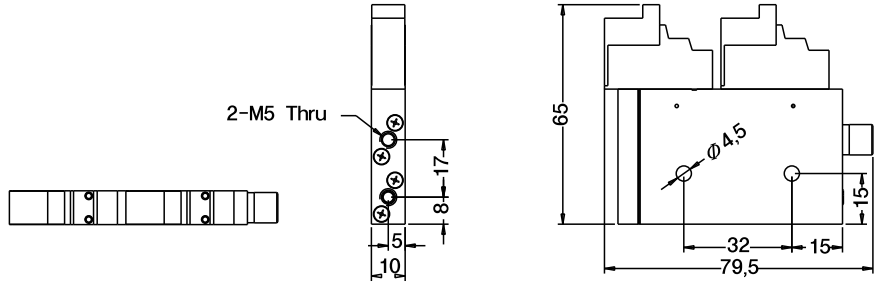
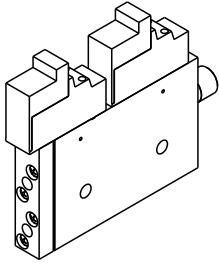
입력/진공측 FILTER ELEMENT : EMS-7E

소음기 : EMS-M8

□ 외형도

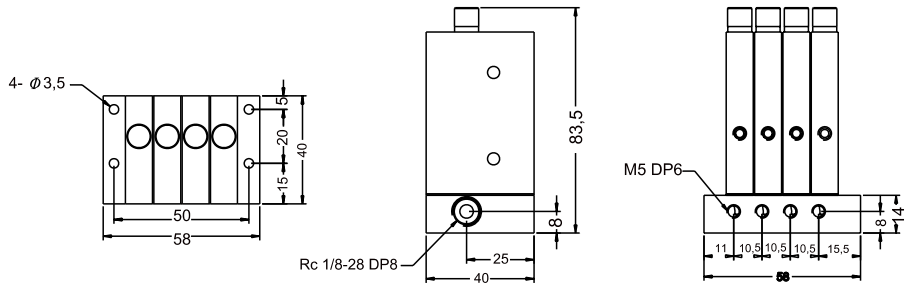
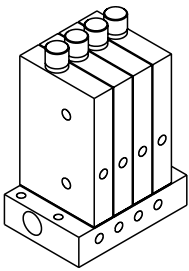
EVS

EVS-XXHS-24B

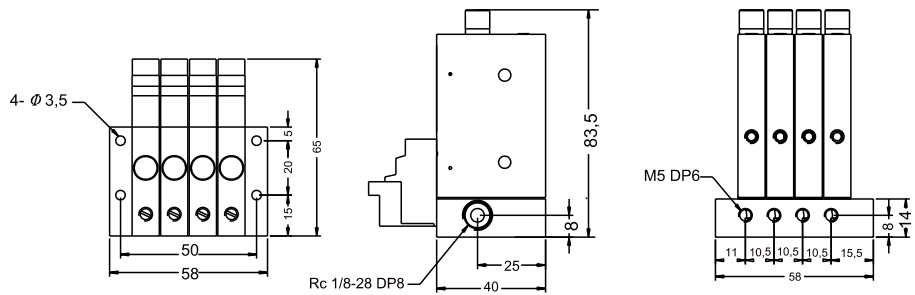
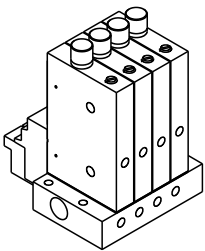


EVSM

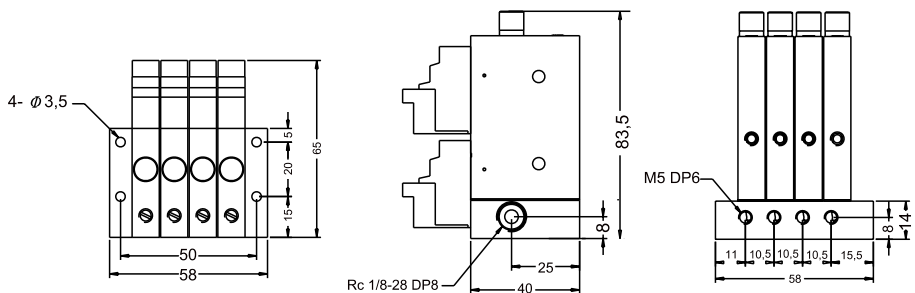
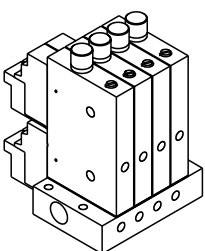
EVSM-XXHS-24-4



EVSM-XXHS-24A-4



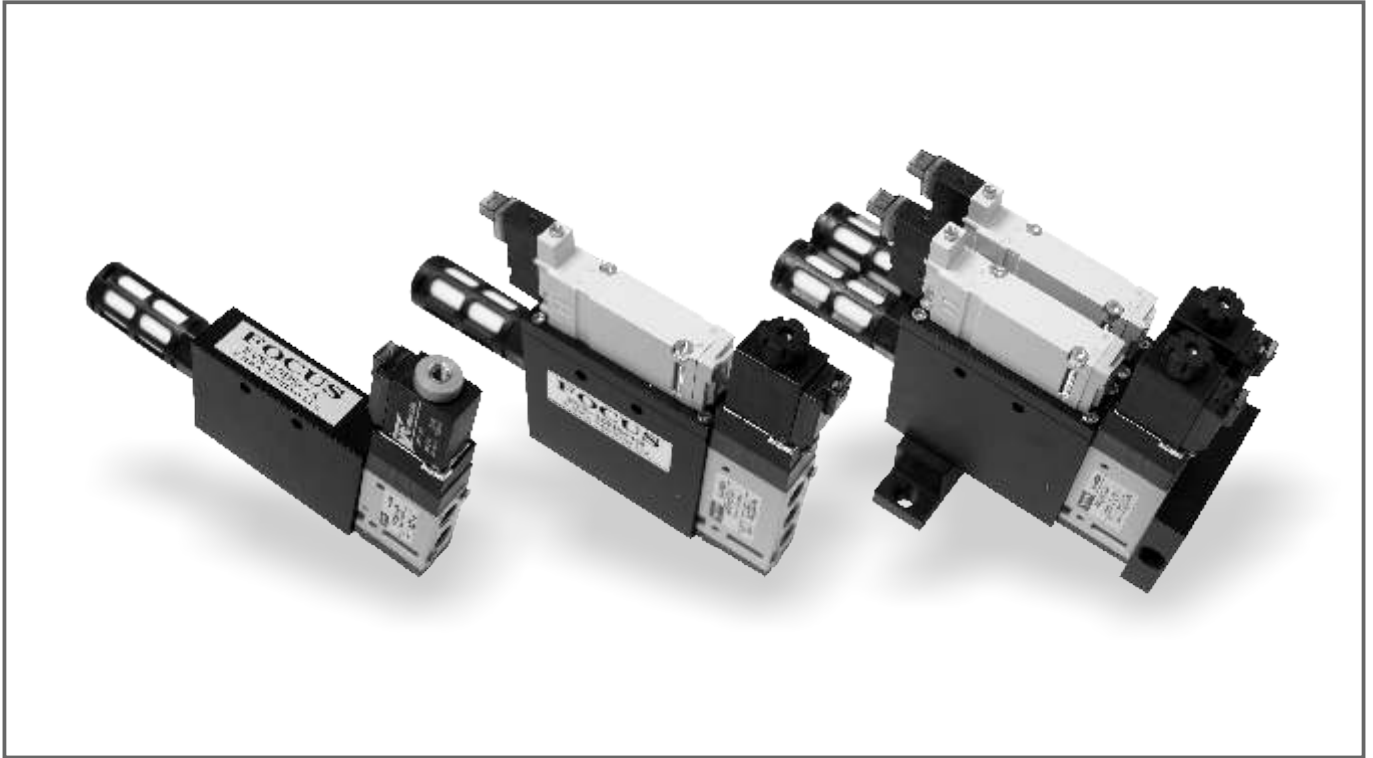
EVSM-XXHS-24B-4



EVS Series

■ 특징

◆ 기존 EV Series의 특징에 Solenoid Valve를 부착하여 더욱 간소화 하였습니다.



◆ 주문방법

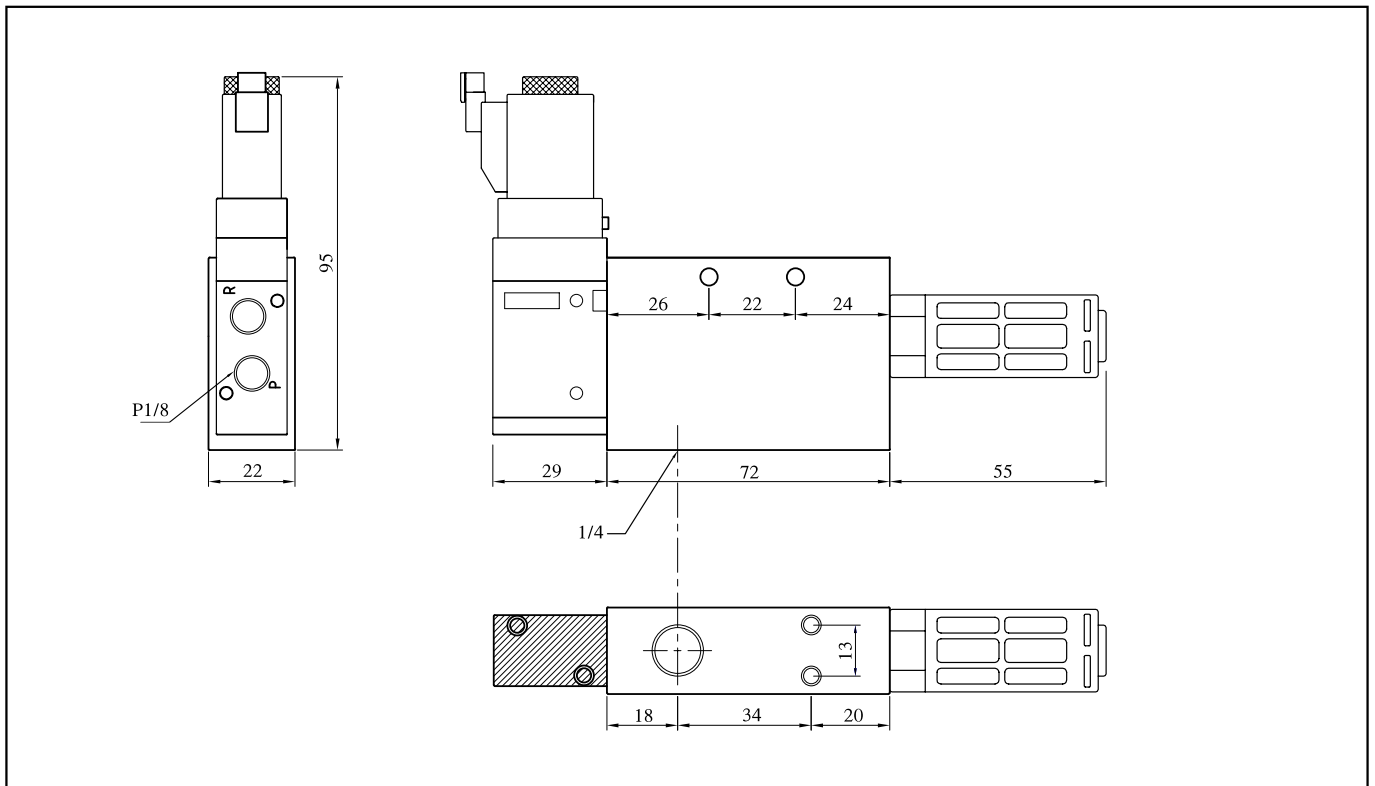
- EVS-10HS-24A / B
- EVS-15HS-110A / B
-220A / B
-24A / B
- EVS-15HS-24B-M(2~3~4)

◆ 진공성능표

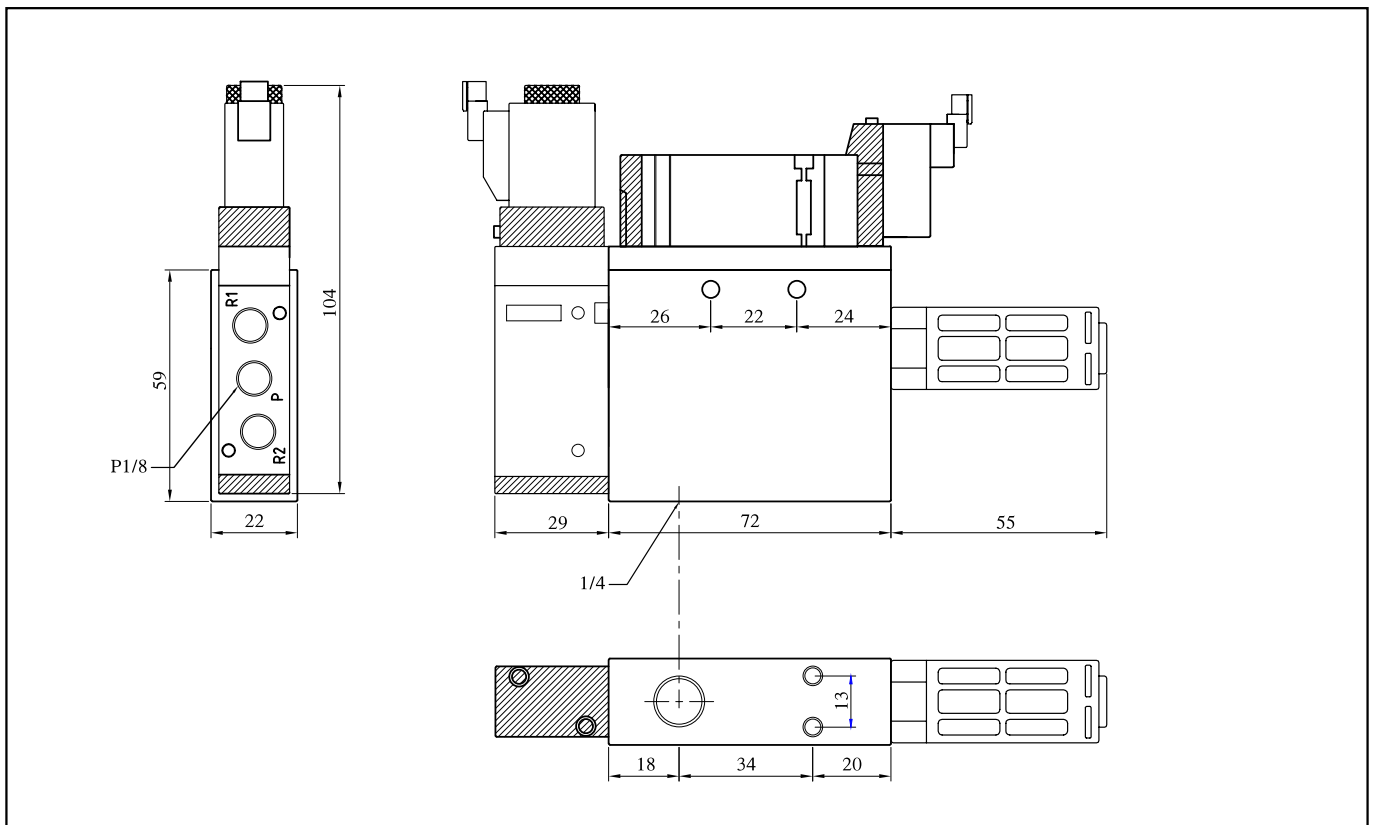
	Nozzle경	배기량	도달진공도	공기소모량	공급공기압력
	mm	l/min(ANR)	-kpa/mmHg	l/min(ANR)	MPa(kgf/cm ² G)
EVS-10HS- * A	1.0	27	92(690)	44	0.5 (5)
EVS-10HS- * B	1.0	27	92(690)	44	0.5 (5)
EVS-15HS- * A	1.5	62	92(690)	100	0.5 (5)
EVS-15HS- * B	1.5	62	92(690)	100	0.5 (5)

◆ 외형도

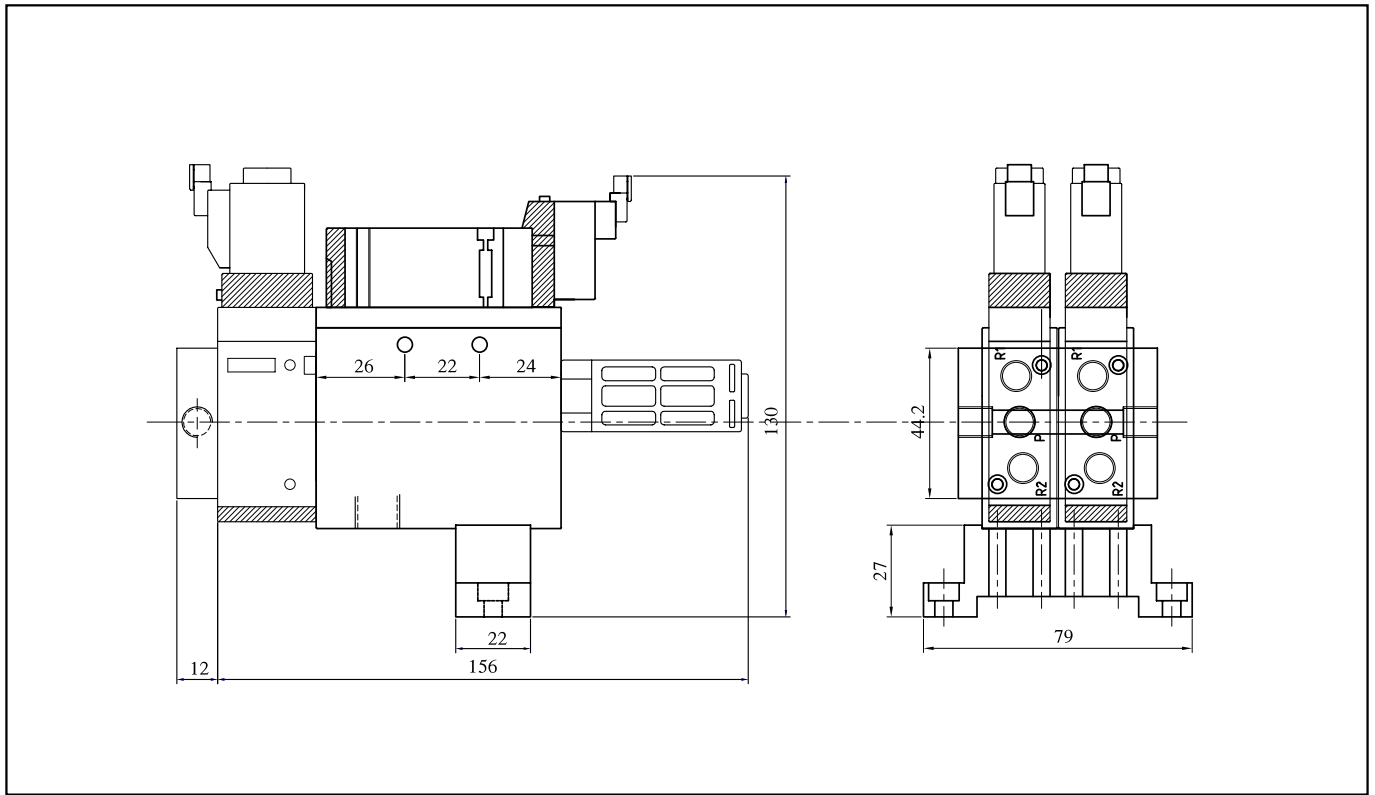
● EVS-15HS-24A



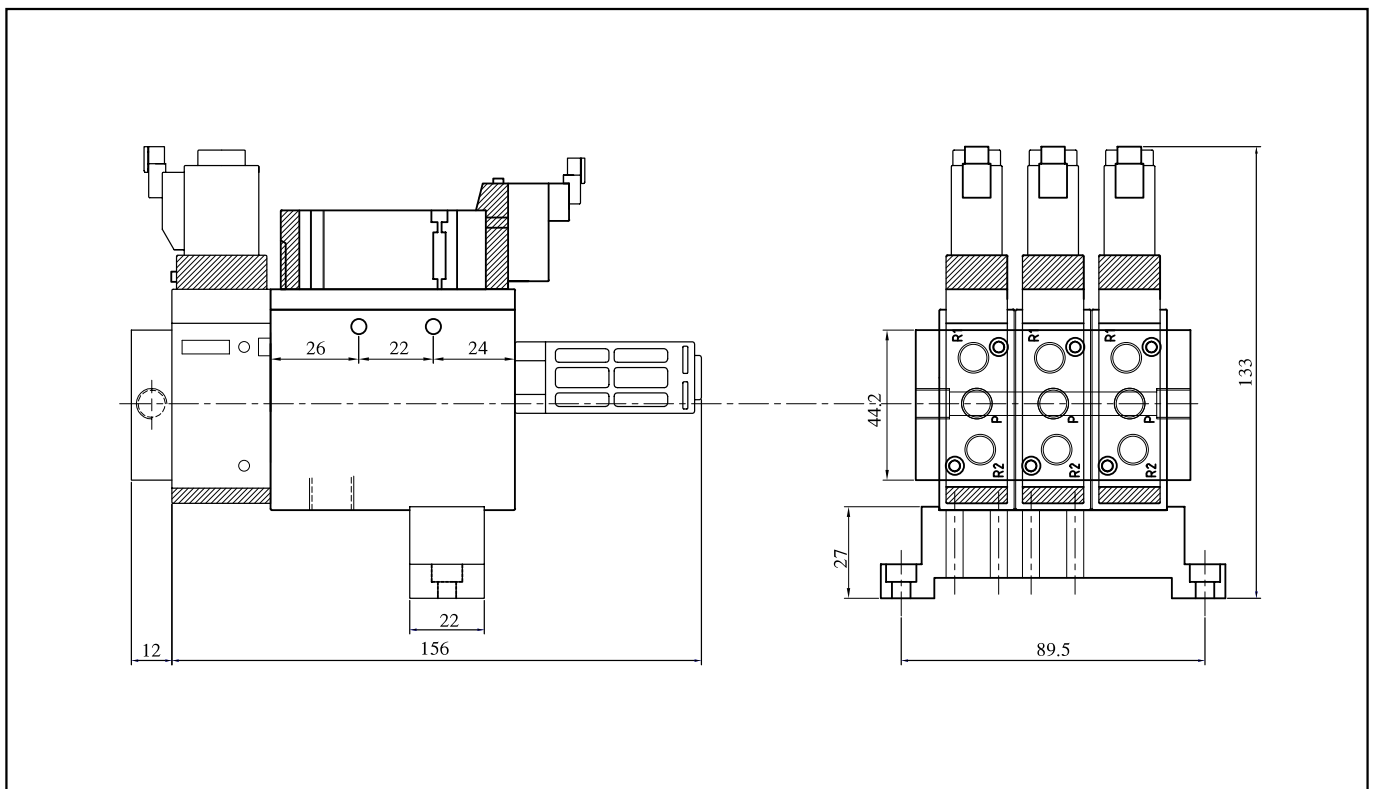
● EVS-15HS-24B



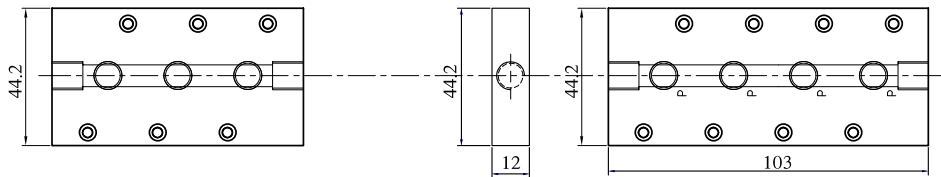
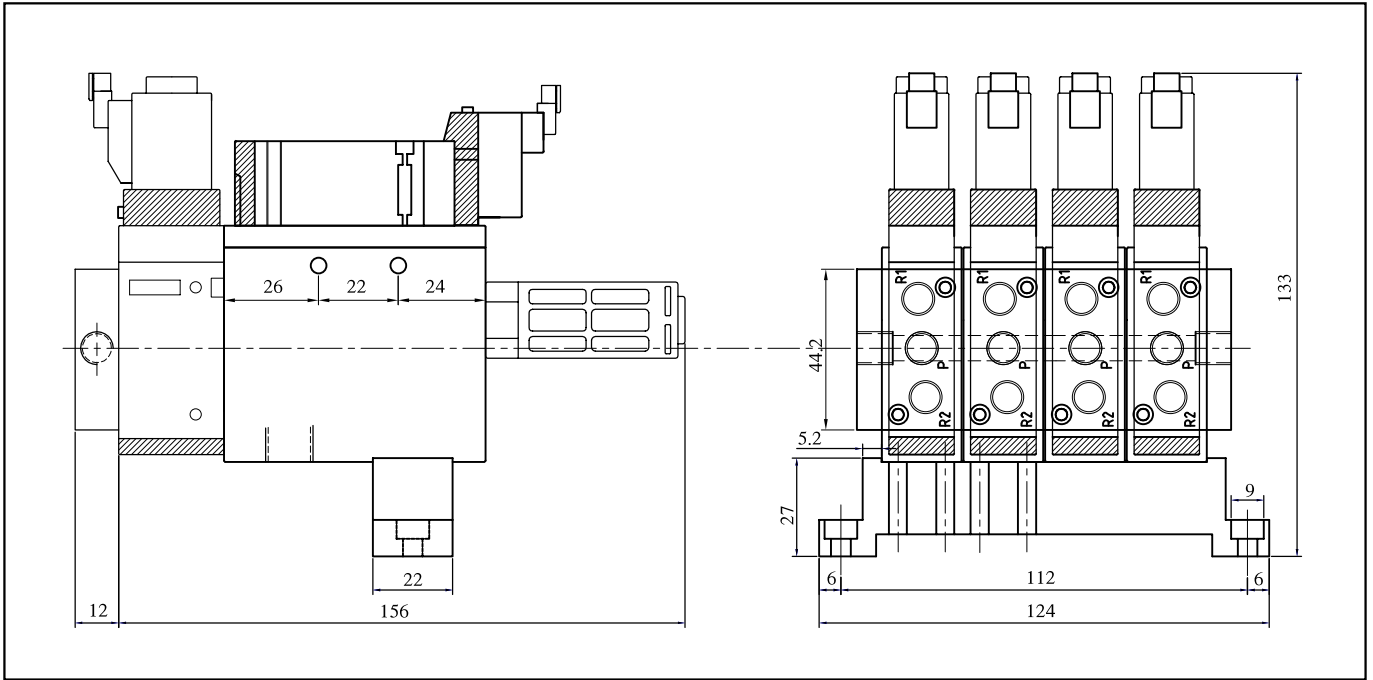
• EVSM-15HS-24B-2 2연조



• EVSM-15HS-24B-3 3연조

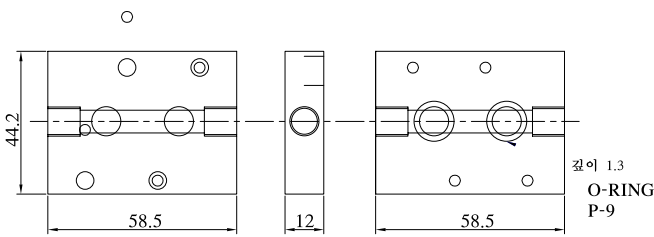


• EVSM-15HS-24B-4 4연조

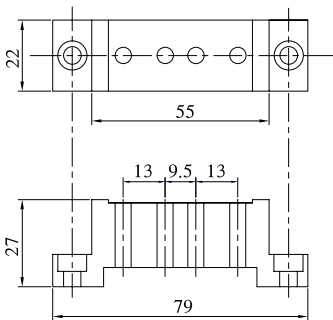


• EVSM-15HS-24B-3 3연조

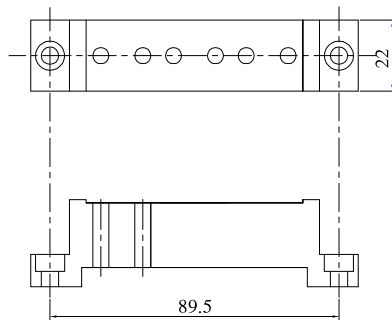
• EVSM-15HS-24B-4 4연조



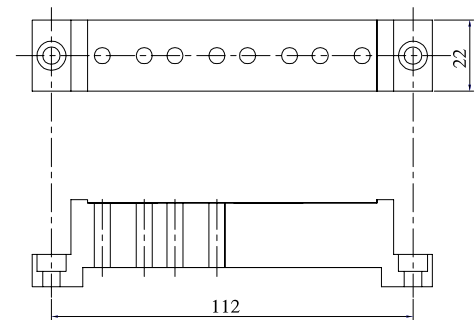
깊이 1.3
O-RING
P-9



• EVSM-15HS-24B-2 2연조



• EVSM-15HS-24B-3 3연조



• EVSM-15HS-24B-4 4연조